





## Picture Production and Bitmap Conversion for GDEW0215T11



### 一、 Make Picture


This screen supports two colors, black and white, both of which are standard colors. In practice, you can refer to the color chart of the Windows system's built-in drawing software. When creating images, you need to create a 208 \* 112 resolution black and white monochrome image and save the image in BMP or jpg format.

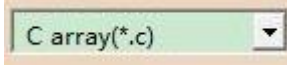
Conception:

1. Monochrome: black, white 
2. Three colors: black, white, red/yellow 
3. Four colors: black, white, red, and yellow 
4. Seven colors: black, white, red, yellow, blue, green, orange 

### 二、 Bitmap Conversion


Bitmap conversion can be done using image2LCD software, which can be downloaded from the official website ( <https://www.good-display.com> ). The interface for setting bitmap conversion parameters is shown in Figure 1:

1. Open the image2LCD software and click the "Open" button  Open, Import the image that needs to be converted;

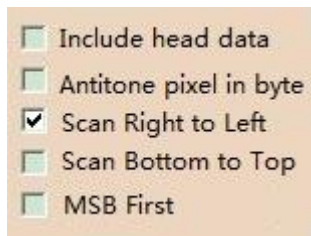
2. Output data type: Select "C array (\*.c)" ;

3. Scanning mode: Select "Vertical Scan" ;


4. Output grayscale: Select "Monochrome" ;

5. Maximum width and height: Select "208" and "112", After selection, you need to click the arrow below to confirm ;

6. Select "Scan Right to Left" for these five options



7. "Reverse Color" Selection ;

8. Click on 'Save'  Save, Save the converted array to a file with an extension of ". C";

9. Finally, replace the corresponding array in the program with the array in the file ". C".

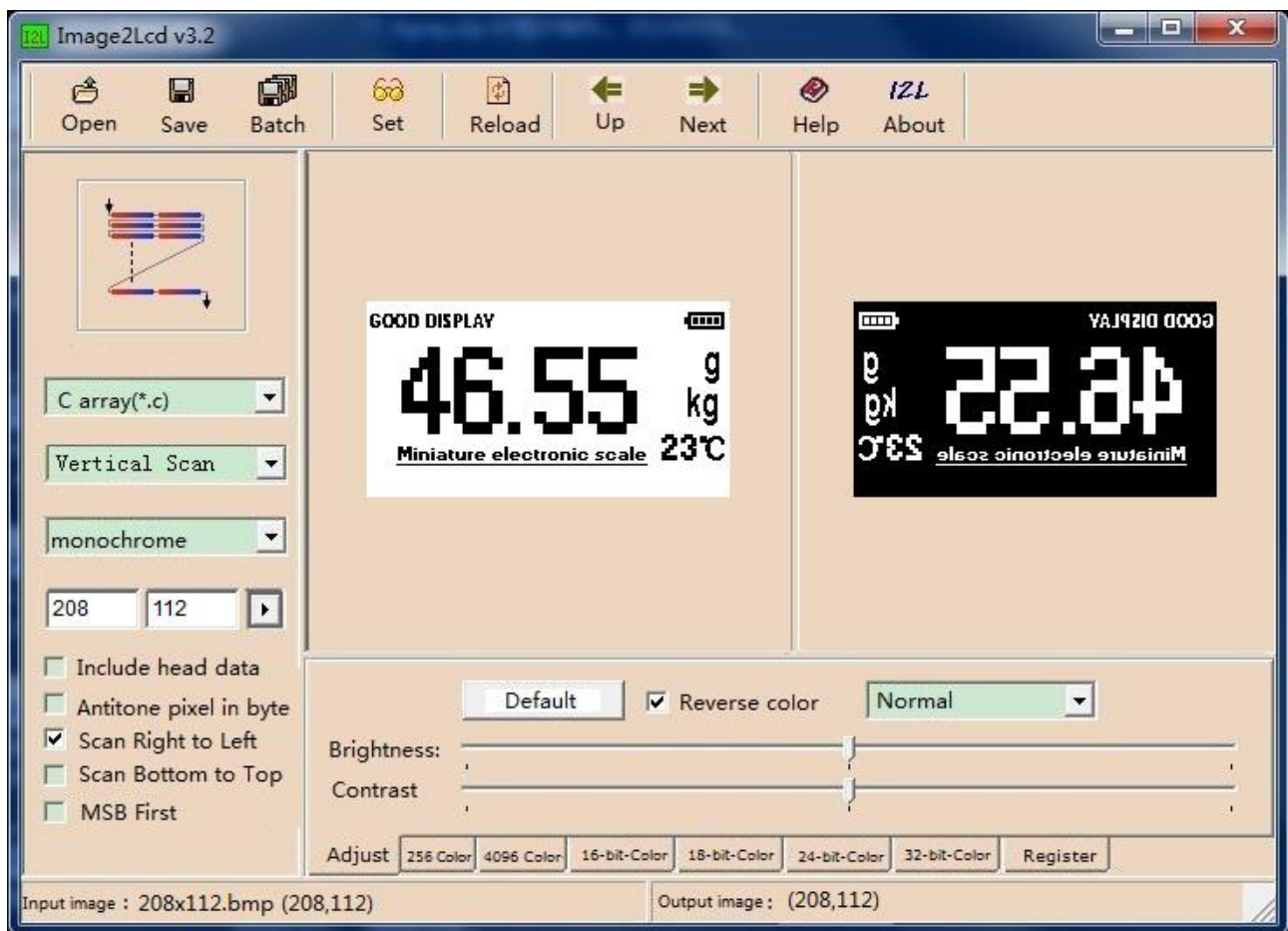


Figure 1